



Approximately 2,760 sq. ft. — Two Story

Sea Girt, NJ  
Monmouth County

## THE PHILADELPHIA

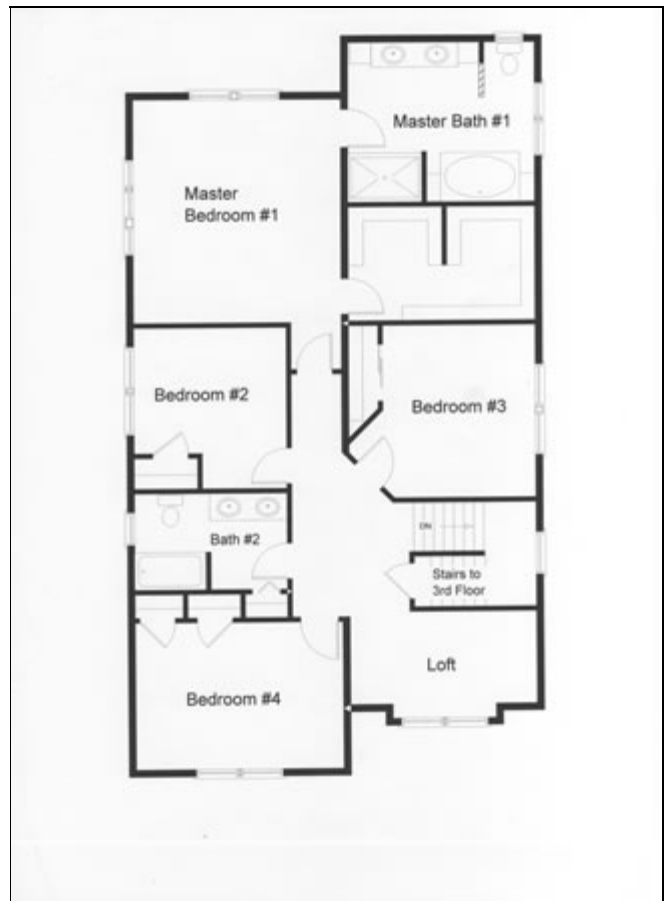
<u>LIVING AREA (SQ FT)</u>	<u>ROOMS</u>	<u>FOUNDATION</u>
Main: 1,380	Bedrooms: 5	Basement: Full
Upper: 1,380	Full Baths: 3	Width: 30'
Third: 450		Length: 46'

[See more details on the Testimonial Page.](#)

**"We never could have built this house as cost effectively without taking the modular approach with RBA, and we certainly could not have done it in the same timeframe. Every other builder we talked to said they couldn't have touched our price!"**



**First Floor**



**Second Floor**

### *2 Story Narrow Lot Floor Plans Modular Home Floor Plans*



RBA Homes  
732.747.3800 • 252 Broad Street • Red Bank, NJ 07701  
[www.rbahomes.com](http://www.rbahomes.com)

