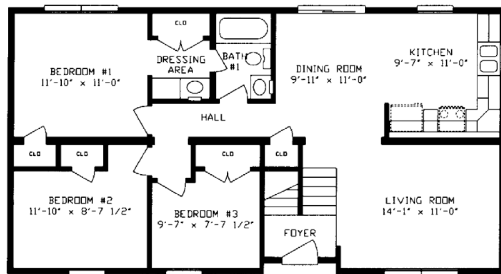


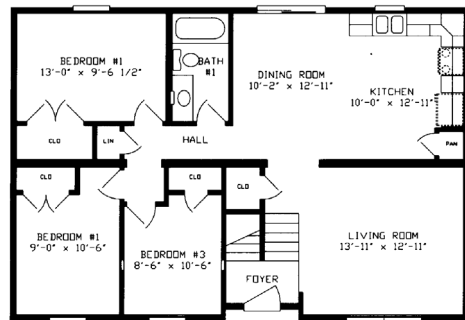
BI-LEVELS



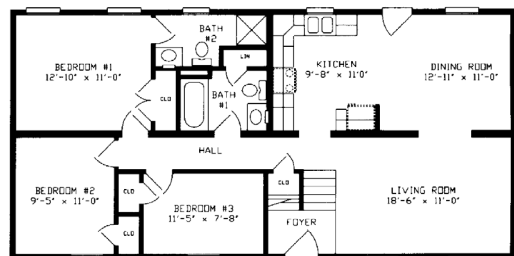
THE FAIRVIEW



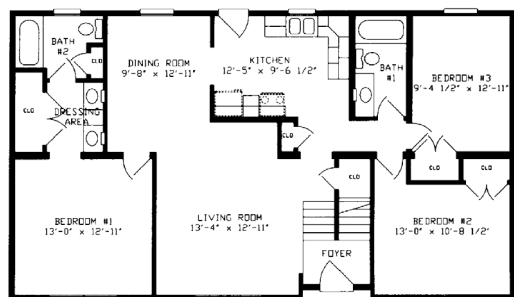
FAIRVIEW I 2444
1041 SQ. FT.



FAIRVIEW II 2840
1100 SQ. FT.



FAIRVIEW III 2448
1136 SQ. FT.

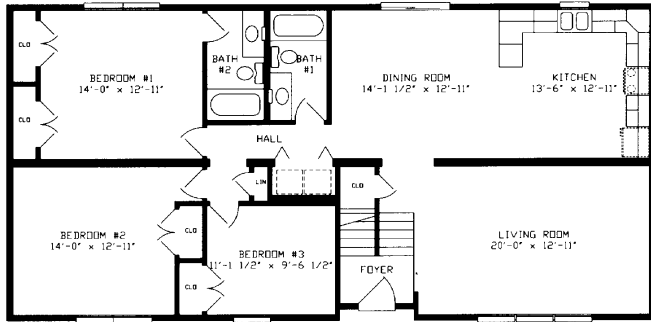
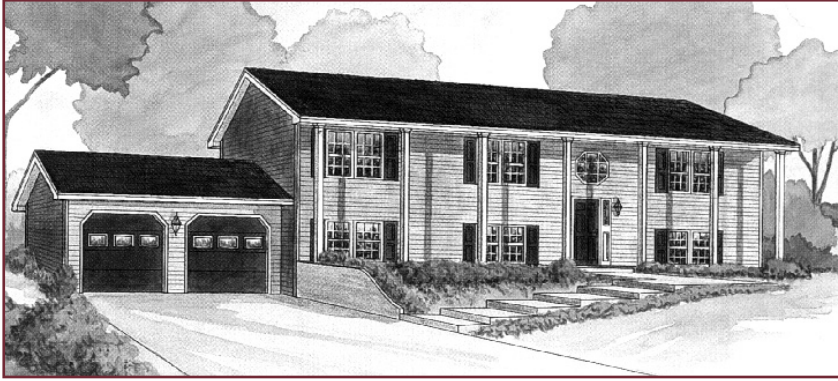


FAIRVIEW IV 2848
1320 SQ. FT.

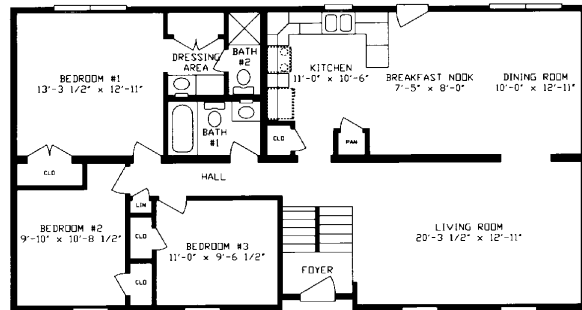
The success of the Bi-Level home is in the utilization of the lower level. The raised foundation affords options for convenient garage space as well as doors and windows to light the additional living space in the lower level. The Fairview features a large kitchen and three spacious bedrooms and is available either with a flush front or the traditional cantilever.



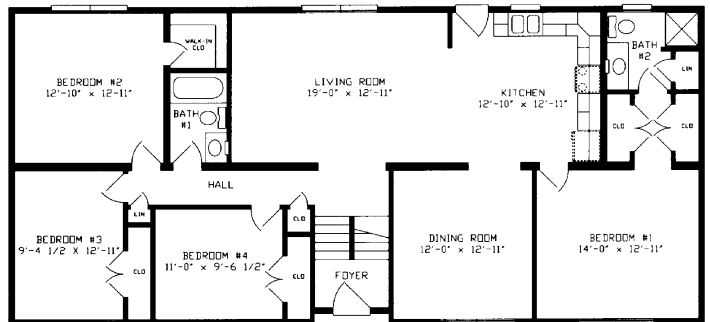
THE PINEVIEW



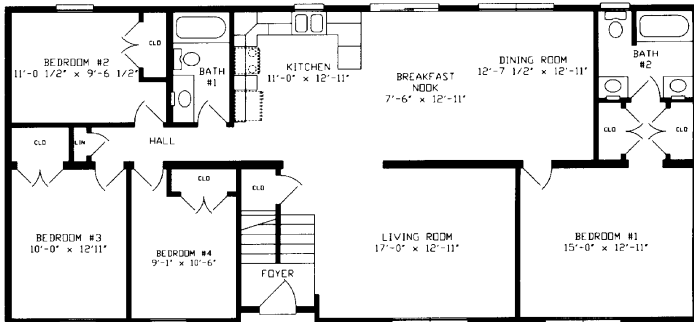
PINEVIEW I 2856
1540 SQ. FT.



PINEVIEW II 2852
1430 SQ. FT.



PINEVIEW III 2860
1650 SQ. FT.



PINEVIEW IV 2860
1650 SQ. FT.